

FACTORY PROFILE

Company identification	Company name	MONASIL COMIMPEX SRL		
	Website	www.monasil.ro		
	Company headquarter (country)	ROMANIA		
	Production sites (countries)	BELGIUM,HOLLAND,ITALY,FRANCE		
	Affiliated group if available (holding)			
Contact details	Mr./Mrs	Mr.		
	Contact name	CORFA BOGDAN SILVIU		
	Contact position	MANAGER		
	Do you speak English (YES / NO)	YES		
	Do you speak German (YES / NO)	NO		
	E-mail	office@monasil.ro		
	Address	DIMITRIE LEONINA NR.25		
	ZIP code	610177		
	City	PIATRA NEAMT		
	Country	ROMANIA		
	Telephone number	0040-233-226501		
	Fax number	0040-233-227867		
	Mobile number	0040-722-350271		
Company figures	Number of employees (total)	94		
	- thereof Production	82		
	- thereof Engineering	2		
	- thereof Quality	4		
	- thereof R&D	1		
	- thereof Admin/Other	5		
	Revenue - Year 2009	EUR	994,559	
	Revenue - Year 2010	EUR	913,132	
	Revenue - Year 2011	EUR	897,673	
	Revenue by market 2011 in % - Domestic	2%		
	Revenue by market 2011 in % - USA	0%		
	Revenue by market 2011 in % - Western Europe	98%		
	Revenue by market 2011 in % - Eastern Europe	0%		
	Company Owner	CORFA MARINEL, MARIA AND SILVIU		
Year of foundation	1993%			

Certifications	Does your company comply with "UN GLOBAL COMPACT" or equal?	NO	
	Export license owned	No	
	ISO 9001	Yes	
	ISO 14001	No	
	Ökotex 100	No	
	Others	Yes	

Service offerings	What percentage of your revenue is ladies' wear?	90%
	Does your company offer Ready-To-Wear service?	Yes
	Does your company offer Cut-Make-Trim Service?	Yes
	Can your company be considered as an agency or a producer?	producer
	Does your company have a sales or distribution partner in Europe?	No
	Other Services offered (i.e. logistics, stock holding, ...)	plotting services, grading and digitizing
If you offer RMG service, please describe your design and R&D organisation		
Creation capacity	Number of designers	1%
	Number of R&D employees	1%
	Number of design items per season	30%
	Does your company create an own collection? If yes, how many items?	30%
	Main source of ideas to create a collection?	International Trends, and own ideas
If you offer RMG service, please describe your purchasing capacity and resources		
Purchasing capacity	Is your company vertically integrated into fabric production?	No
	Outer fabrics, woven - plain	5 suppliers, Italy, around 9500 m
	Outer fabrics, woven - printed	5 suppliers, Italy, around 2000 m
	Outer fabrics, knit - plain	3 suppliers, Italy,Belgium,Turkey around 30000 m
	Outer fabrics, knit - printed	3 suppliers, Italy,Belgium,Turkey around 2000 m
	Lining fabrics	5 suppliers, Italy,Belgium,Romania around 15000 m
	Accessories (i.e. buttons, zippers, etc.)	23 suppliers

	Please name your main client references		Max Mara, Marella, MDN, Maria Rinaldi, Stills&Sandwitch, Kenzo, Sonya Rikyel Francoise Pandville, Gysemans, Tommy Hilfiger, Torras, Trussardi, Cerruti,Odeur, Hansen&Jacob Salma Awwad, Diega, Hotel Particulier				
	Who are your main international competitors?		China, Turkey, Indonesia, Vietnam etc.				
	Please name your target markets and end users of your products		Europe and Russia				
	Please select your peak season months	Peak Season	Off Season	Off Season	Peak Season	Peak Season	Peak Season
		Peak Season	Peak Season	Off Season	Peak Season	Peak Season	Peak Season
	Does your company manufacture prototypes (1 piece / model)		Yes				
	Does your company manufacture collection samples (<20 pcs. / model)		Yes				
	Which of the following product groups does your company manufacture?						
	product group 01 WOOLLEN COAT	feasible for brand A	wool available	select leather =>	real fur available		
		STANDARD AND DIFFICULT					
	product group 02 OUTDOOR JACKET / WEST	not feasible	wool available	select leather =>	real fur available		
		No					
	product group 03 DOWN JACKET	please fill in specific reference customers					
		feasible for Brand A					
	product group 04 BLAZER JACKET	STANDARD AND DIFFICULT					
feasible for Brand A							
product group 05 BLOUSE JACKET	STANDARD AND DIFFICULT						

Production capabilities	product group 06 BLOUSE or TOP	feasible for Brand A STANDARD AND DIFFICULT				
	product group 07 TROUSER	feasible for Brand A STANDARD AND DIFFICULT				
	product group 08 SKIRT	feasible for Brand A STANDARD AND DIFFICULT				
	product group 09 DRESS	feasible for Brand A STANDARD AND DIFFICULT				
	product group 10 JEANS	not feasible please fill in specific reference customers				
	Please fill in the following criteria for each product group marked above with "YES"	WOOLLEN COAT	OUTDOOR JACKET	DOWN JACKET	BLAZER JACKET	BLOUSE JACKET
	order lead time	4 weeks			4 weeks	4 weeks
	minimum order quantity per item (style and colour combined)	1 pieces			1 pieces	1 pieces
	installed production capacity per year	66,000 pieces			77,000 pieces	100,000 pieces
	peak season capacity per month	6,000 pieces			7,000 pieces	9,000 pieces
	off peak season capacity per month	4,000 pieces			4,700 pieces	6,300 pieces
	number of sewing lines installed for this product group	3 sewing lines			3 sewing lines	3 sewing lines
	Please fill in the following criteria for each product group marked above with "YES"	BLOUSE OR TOP	TROUSER	SKIRT	DRESS	JEANS
	order lead time	4 weeks	4 weeks	4 weeks	4 weeks	
	minimum order quantity per item (style and colour combined)	1 pieces	1 pieces	1 pieces	1 pieces	
	installed production capacity per year	170,000 pieces	170,000 pieces	170,000 pieces	170,000 pieces	
	peak season capacity per month	15,000 pieces	15,000 pieces	15,000 pieces	15,000 pieces	
	off peak season capacity per month	10,700 pieces	10,700 pieces	10,700 pieces	10,700 pieces	
	number of sewing lines installed for this product group	3 sewing lines	3 sewing lines	3 sewing lines	3 sewing lines	

pattern making department		
CAD software equipment	in house	ASSYST BULLMER - FILES SUPPORTED - LECTRA, GERBER, INVESTRONICA
CAD file transfer (email or other)	in house	ASSYST BULLMER - LECTRA, GERBER, INVESTRONICA
CAD plotting	in house	ALGOTEX - STREAMJET 180
fabric cutting department		
automatic cutter	No	If yes, please name the manufacturer of the equipment and software
cutting tables	Yes	1 pieces
vertical knives	Yes	4 pieces
band knives	Yes	2 pieces
Fusing press minimum width 100 cm	Yes	2 pieces
quality management		
Does your company work with quality supervisors?	Yes	26
Does your company work with final inspectors?	Yes	26
Does your company work with in line measurement controls?	Yes	26
Does your company work with inline quality control?	Yes	26
Quality inspection system used by your company	100% control	If "other", please give a description

Machinery equipment

sewing department, for more information please refer to the homepage of the respective manufacturer		
1 needle lock stitch machine		0 pieces
1 needle lock stitch machine minimum Mara 11		0 pieces
1 needle lock stitch machine minimum Mara 8		0 pieces
1 needle lock stitch machine with vertikal knife		40 pieces
1 needle lock stitch machine with binder		40 pieces
Saftey stitch machine		0 pieces
Overlock saftey stitch machine		10 pieces
Saftey stitch machine for rolled hemming		0 pieces
2/3 needle coverstitch machine for beltloops		1 pieces
2/3 needle coverstitch machine		1 pieces
blind stitsh sewing machine)		2 pieces
double blind stitch sewing machine)		1 pieces
eyelet buttonholing machine		1 pieces
buttonholing machine		1 pieces
Bartacking machine for eyelet buttonhole		1 pieces
Bartacking machine		1 pieces
Button sewing machine		3 pieces
button wrapping machine		1 pieces
sleeve setting machine		2 pieces
Rivet and eylet punch		1 pieces
Skirt length equipment		0 pieces
1 needle double chainstitch machine		1 pieces
2 needle lockstitch machine		5 pieces
1 Needle Zig-Zag lockstitch machine		1 pieces
AMF		1 pieces
AMF imitated		1 pieces
What special equipment can your company provide?	automated pocketing (paspoile) machine, waistband machine, etc	
ironing and finishing department		
Dummys size 38,42,46		1 pieces
Inline iron board		4 pieces
Final iron board		5 pieces
Lining ironing table		1 pieces
Blow up dummy		1 pieces
Dummy pressing table		0 pieces
Shoulder press		0 pieces
Chest press		0 pieces
Sleeve press		0 pieces
Wrapping machine (closing both tube ends)		1 pieces
additional techniques		
embroidery	please select =>	please name manufacturer and number of machines
crushing	please select =>	please name manufacturer and number of machines
pleating	please select =>	please name manufacturer and number of machines
washing	please select =>	please name manufacturer and number of machines

OWNERS

Marinel Corfa



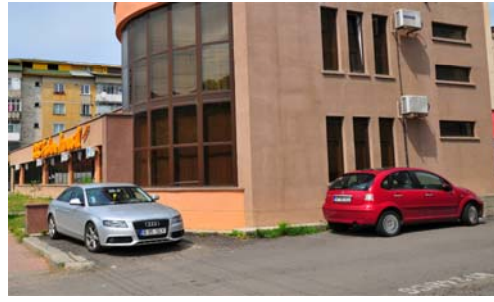
Maria Corfa



Silviu Corfa



Factory outside view



Cutting department



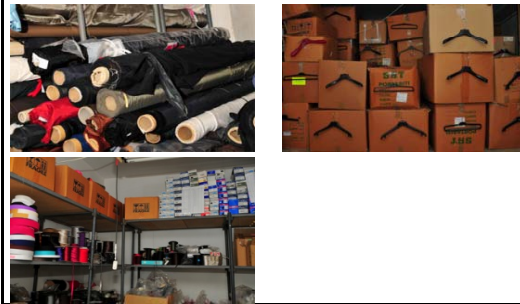
Pattern department



Fusing Press



Fabric and accessories warehouse



Sewing Machines



Special Machines



Ironing

